

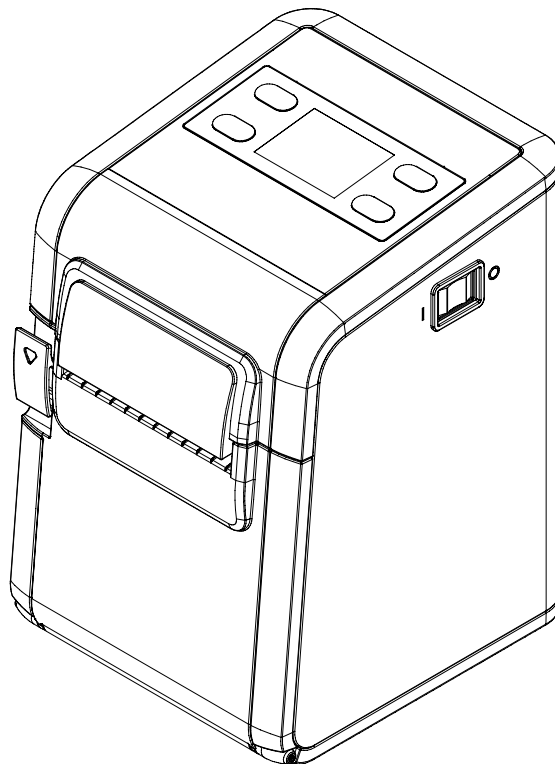
BIXOLON

Network Connection Manual

LINERLESS PRINTER

Ver. 1.00

SRP-S3000



<http://www.bixolon.com>

Table of Contents

1. Manual Information	3
2. Precautions.....	3
3. Specifications.....	4
4. How to Connect	5
4-1 Connecting Printer	5
4-1-1 USB cable.....	5
4-1-2 WLAN.....	5
4-2 Checking Network Setting.....	6
4-2-1 LAN and Wireless(WLAN or BLUETOOTH)	6
4-2-2 LAN Setting Values	7
4-2-3 WLAN Setting Values	8
4-3 Android Soft AP mode	9
4-4 iOS Soft AP mode	10
4-5 How to change Infrastructure mode	11
5. Ethernet Test by using Windows Test Page.....	13
6. Factory Reset	20
6-1 Initializing WLAN Setting.....	20
6-2 Factory Reset Values	21
7. Troubleshooting	22

1. Manual Information

This manual provides information on the connection of wireless network with the printer.

We, BIXOLON, are making continuous improvements to improve the function and quality of our products. As a result, the specifications of the product and the contents of the manual can be changed without prior notice.

2. Precautions

- The printer has to be within 100m(Outdoor) from AP(Access point) to connect WLAN. Although 35m is able to communicate in door, WLAN could be affected by environment to be shorten.



- Indicates that the wireless LAN is connected normally



- Indicates that the WLAN password is wrong



- Indicates that the AP of the set SSID is not nearby

- The maximum separating distance may be shortened if transmission obstacles, such as cement walls, are present.

- If a device (such as a microwave oven, wireless LAN, etc.) that uses the same frequency is present, transmission may be interrupted. Separate the printer and Bluetooth-enabled device from such interrupting devices by a distance of at least 5m.

3. Specifications

CATEGORIES	FEATURE	IMPLEMENTATION	
LAN Specification	Interface	10/100 Base-T All in one(Auto detection)	
	Protocol	DHCP Client, HTTP, ARP, ICMP, IPv4, TCP, UDP	
WLAN Specification	Operation Mode	Infrastructure, Soft AP, Ad-hoc, Wi-Fi Direct	
	Wireless Standard	IEEE 802.11b/g/n, IEEE 802.11a/b/g/n	
	Range	Up to 100m free space (Outdoor)	
	Security		WEP64/128
			WPA1/2 - PSK
		WPA 1/2 - Enterprise (EAP-TLS, EAP-TTLS, PEAP, LEAP, EAP-FAST)	
Management		WLAN Configuration tool, HTTP, Smart connection APP	

4. How to Connect

WLAN can be configured through the printer's WLAN interface. Likewise, WLAN can also be configured through the printer's USB interface.

4-1 Connecting Printer

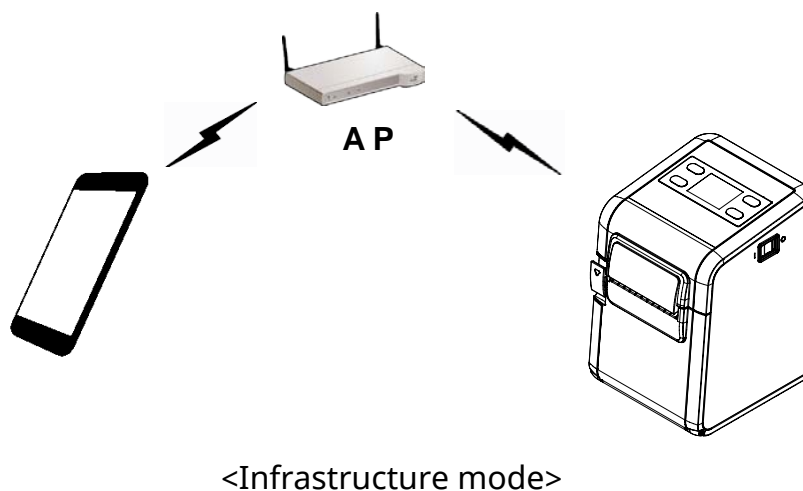
4-1-1 USB cable

Connect USB cable to Printer, PC device.

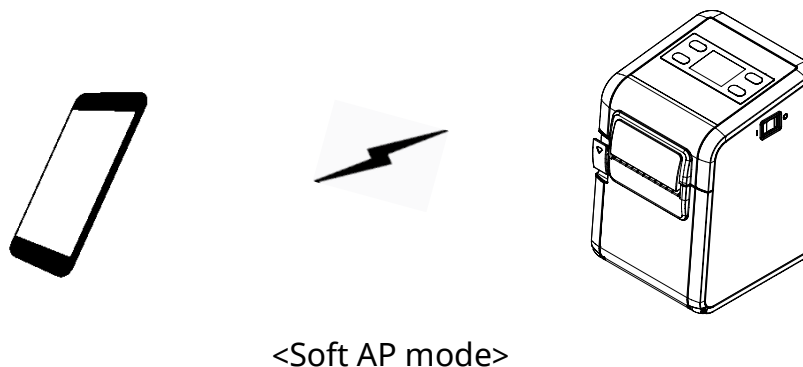
Use the "Net Configuration Tool" to adjust the settings.

4-1-2 WLAN

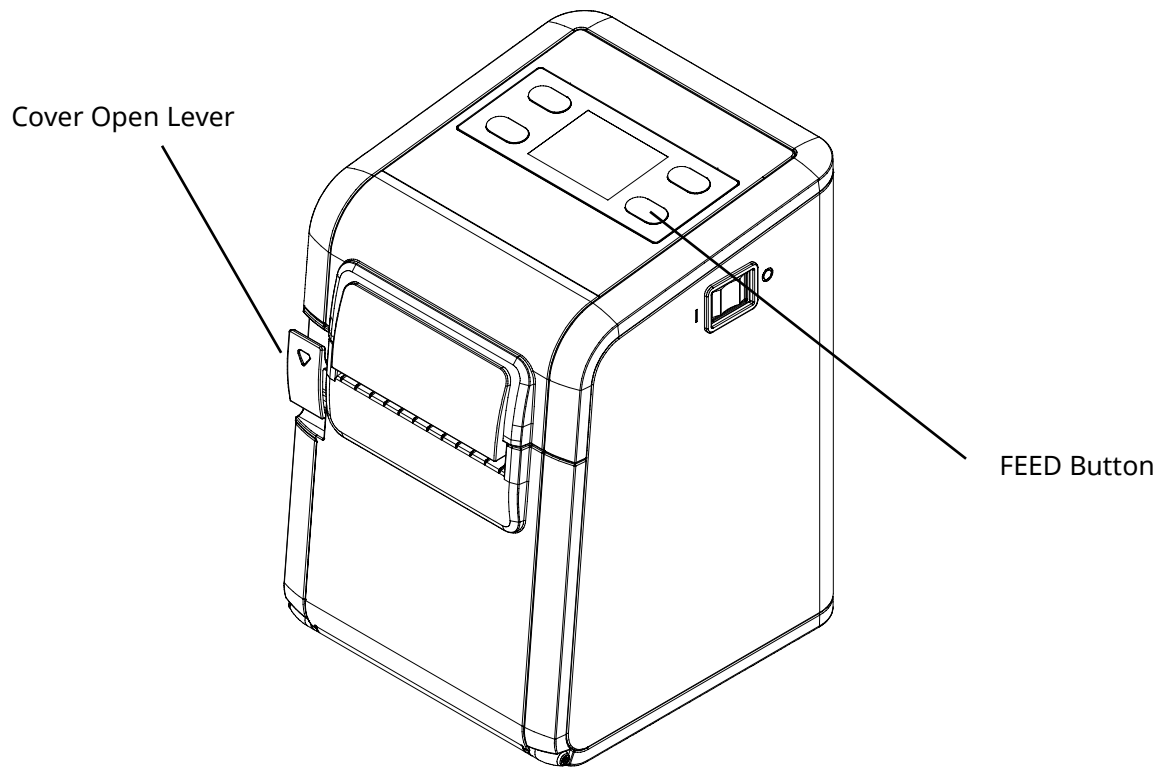
Connect to the AP (Access Point) configured in Infrastructure mode in order to connect to the LAN/wireless network



In order to configure the network between the wireless host device and the printer, set the printer to Soft AP Mode.



* Soft AP mode is only supported on WLAN.

4-2 Checking Network Setting**4-2-1 LAN and Wireless(WLAN)**

With the printer power off, press the FEED button and press the printer power button to power on the printer and release both buttons to output the printer setting value. Or, after the printer boot is complete, check the setting value through the communication item in the LCD menu.

4-2-2 LAN Setting Values

Classification	Item	Description	Input Range
Network	Inactivity Time	TCP connection hold time	0~3600 integer
	IP Assignment Method	IP Assignment Method	DHCP/Manual
	IP Address	Printer IP	IP Address
	Subnet Mask	Subnet mask	IP Address
	Gateway	Default Gateway	IP Address

4-2-3 WLAN Setting Values

Classification	Item	Description	Input Range
Home		WLAN setting status display	
Network	Network Mode	Wireless LAN operating mode	Infrastructure/Adhoc
	Adhoc Channel	Channel when creating Adhoc network	1~14
	SSID	ID of the AP to connect	1~32 letters
	Inactivity Time	TCP connection hold time	0~3600 integer
	IP Assignment Method	IP Assignment Method	DHCP/Manual
	IP Address	Printer IP	IP Address
	Subnet Mask	Subnet mask	IP Address
	Gateway	Default Gateway	IP Address
Authentication	DNS	Domain name server IP	IP Address
	Authentication	Wireless LAN authentication method	open, shared, wpa1/2-psk, wpa1/2
	Cryptograph	Wireless LAN encryption method	none, WEP64/128, TKIP, AES
	EAP Mode	Authentication method	none, PEAP, TLS, LEAP, FAST
	WEP Key	Key for WEP encryption method	WEP64 (5 Ascii, 10 Hex) WEP128 (13 Ascii, 26 Hex)
	PSK Key	Key for PSK encryption method	1~64 letters
	Authentication ID	ID for EAP Authentication	1~32 letters
Authentication PW	Password for EAP Authentication	1~32 letters	

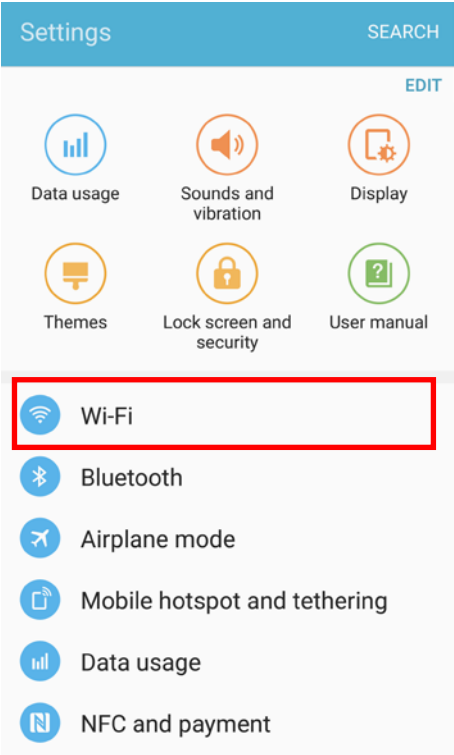


Note

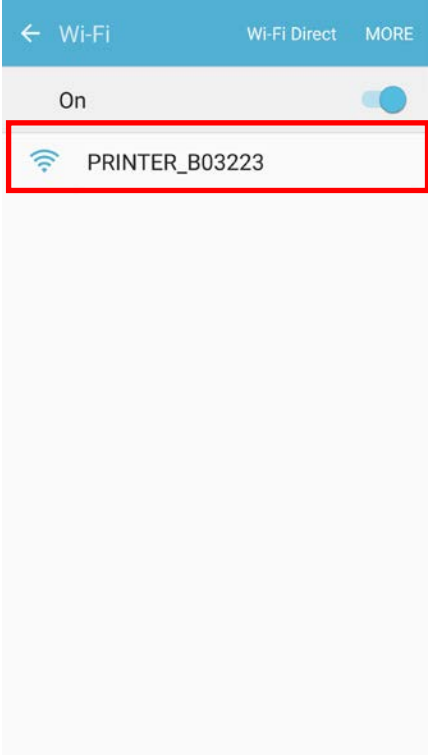
For changing network setting values using Net configuration tool, Refer to 'Net configuration tool manual'.

4-3 Android Soft AP mode

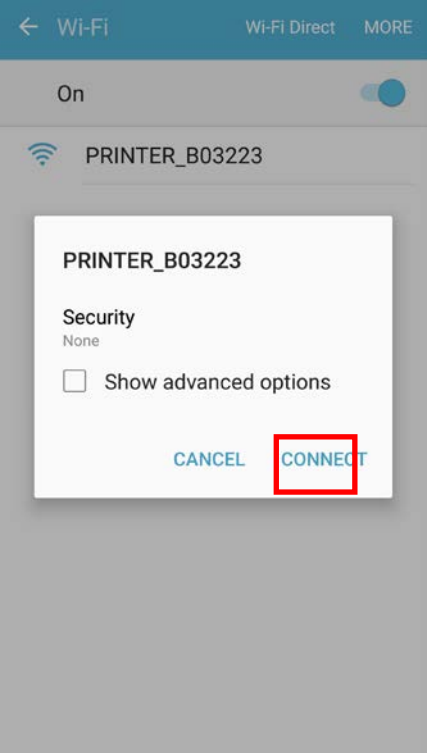
1) Select "Wi-Fi".



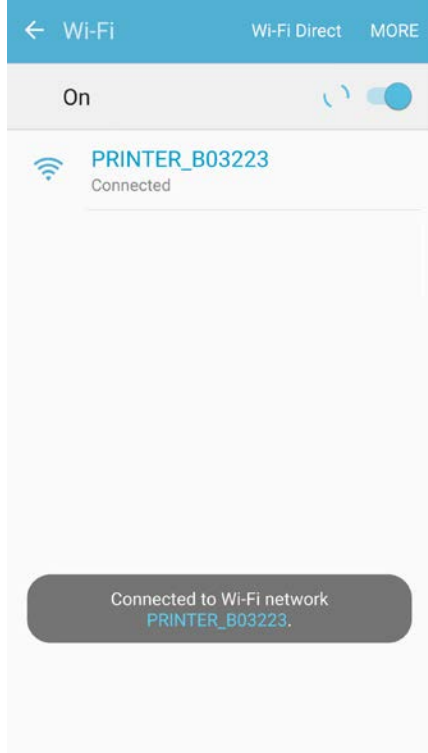
2) Select the printer to connect.



3) Select "CONNECT".



4) Wi-Fi communication is available.

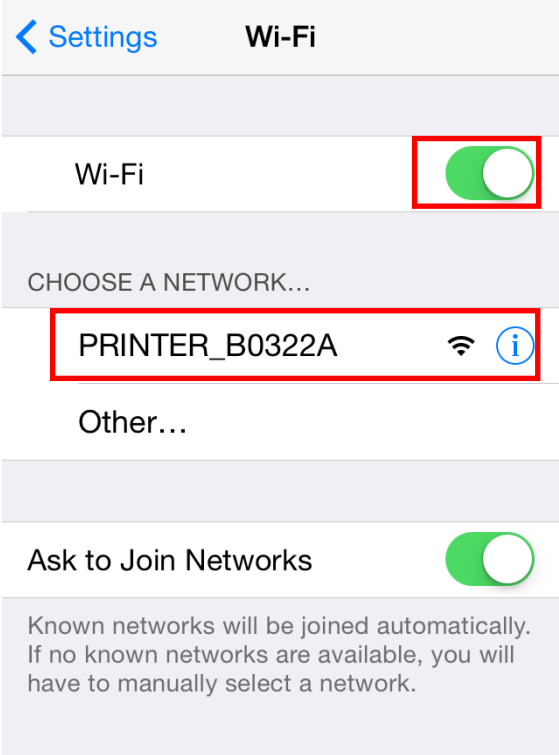


4-4 iOS Soft AP mode

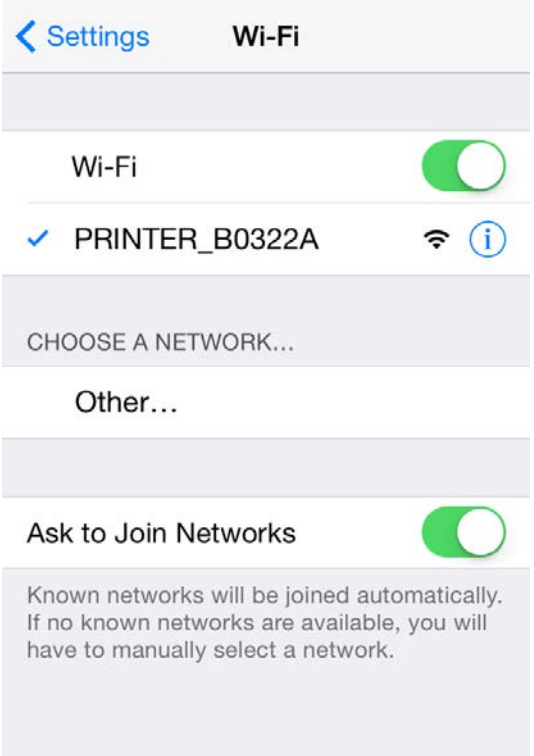
1) Select "Wi-Fi".



2) Wi-Fi ON and Select the printer to connect.



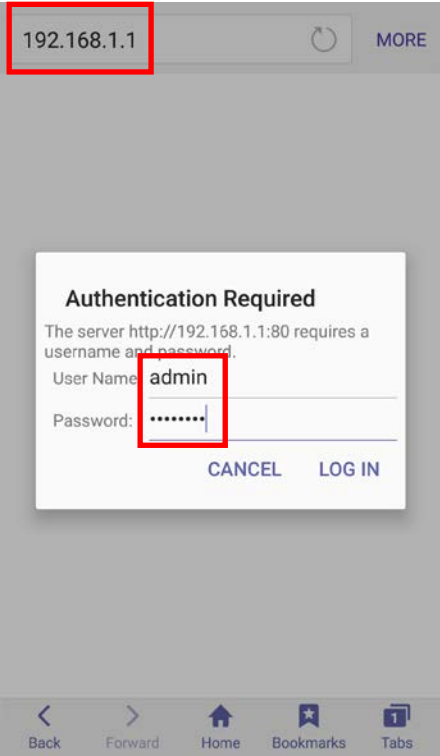
3) Wi-Fi communication is available.



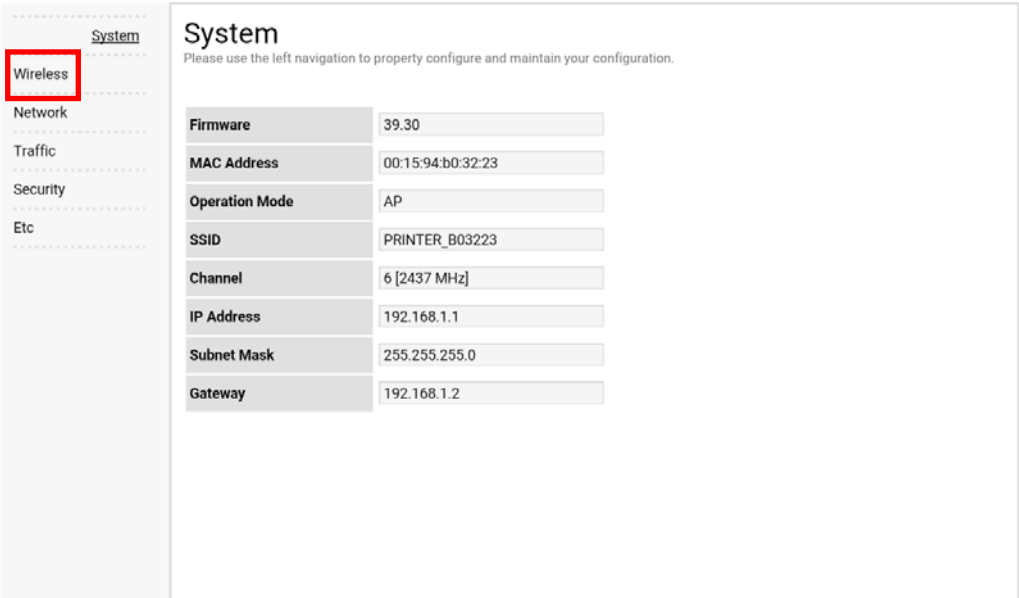
4-5 How to change Infrastructure mode

1) Enter the IP address of the printer in the address bar, and the following login window will pop up. Enter the ID and Password set for the printer, and then click [LOG IN]

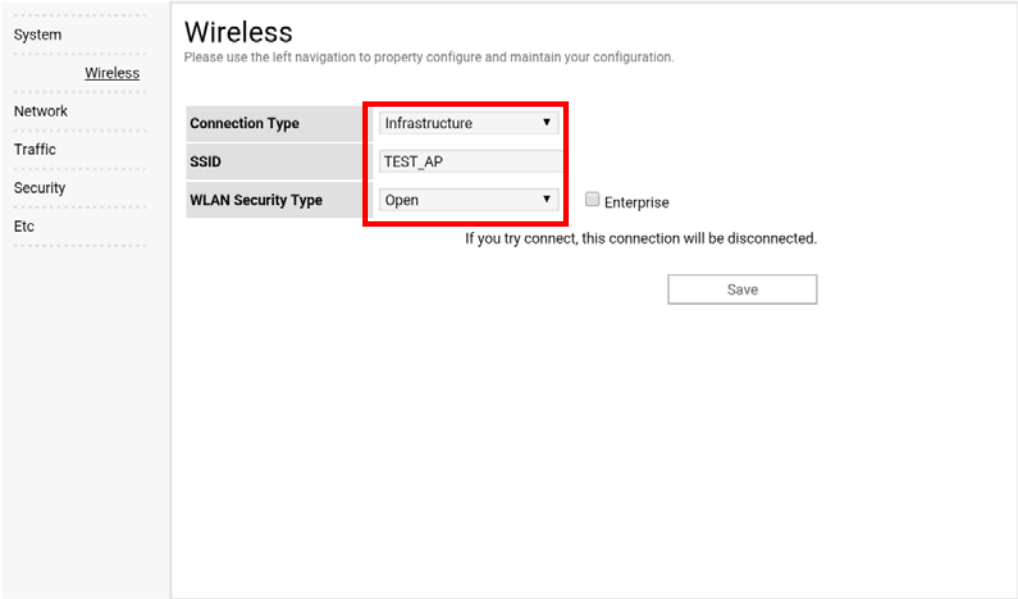
(Default User Name: admin, Password: password)



2) Select “Wireless” to change Wi-Fi mode.



3) Select "Infrastructure", and set SSID, WLAN Security Type.



4) Reboot the Printer.

5. Ethernet Test by using Windows Test Page

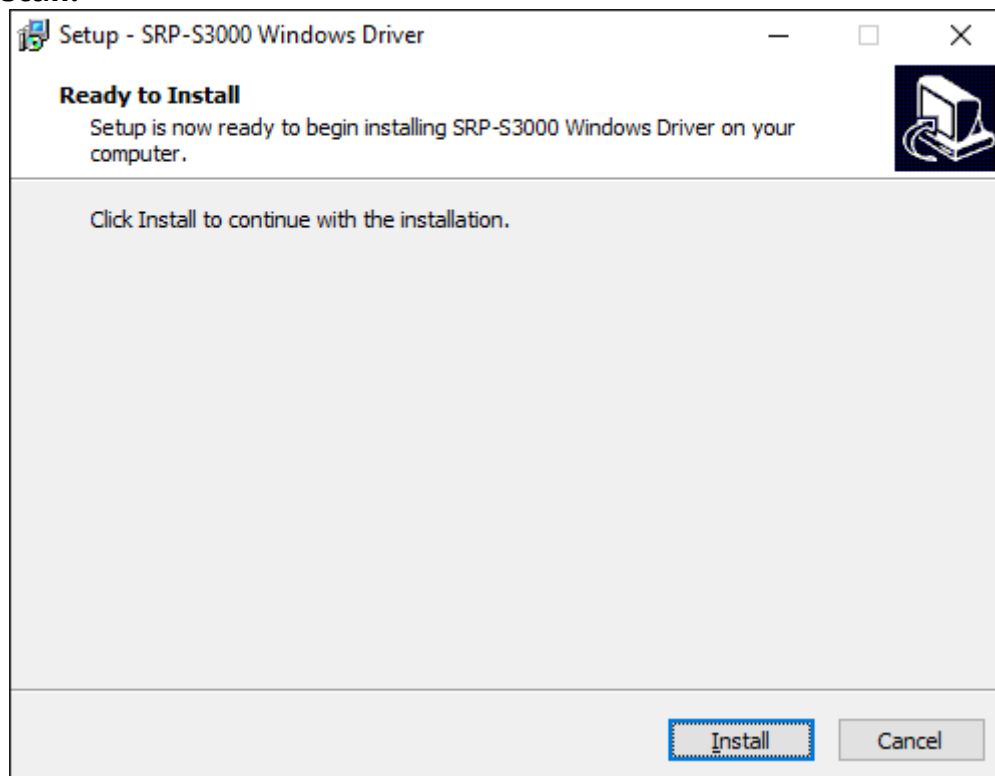
You can use the Windows printer driver as shown below when there is no test program. Operating systems that allow you to use the Windows printer driver are Windows, XP, Server 2003, VISTA, 2008 Server, 7, 8, 10.



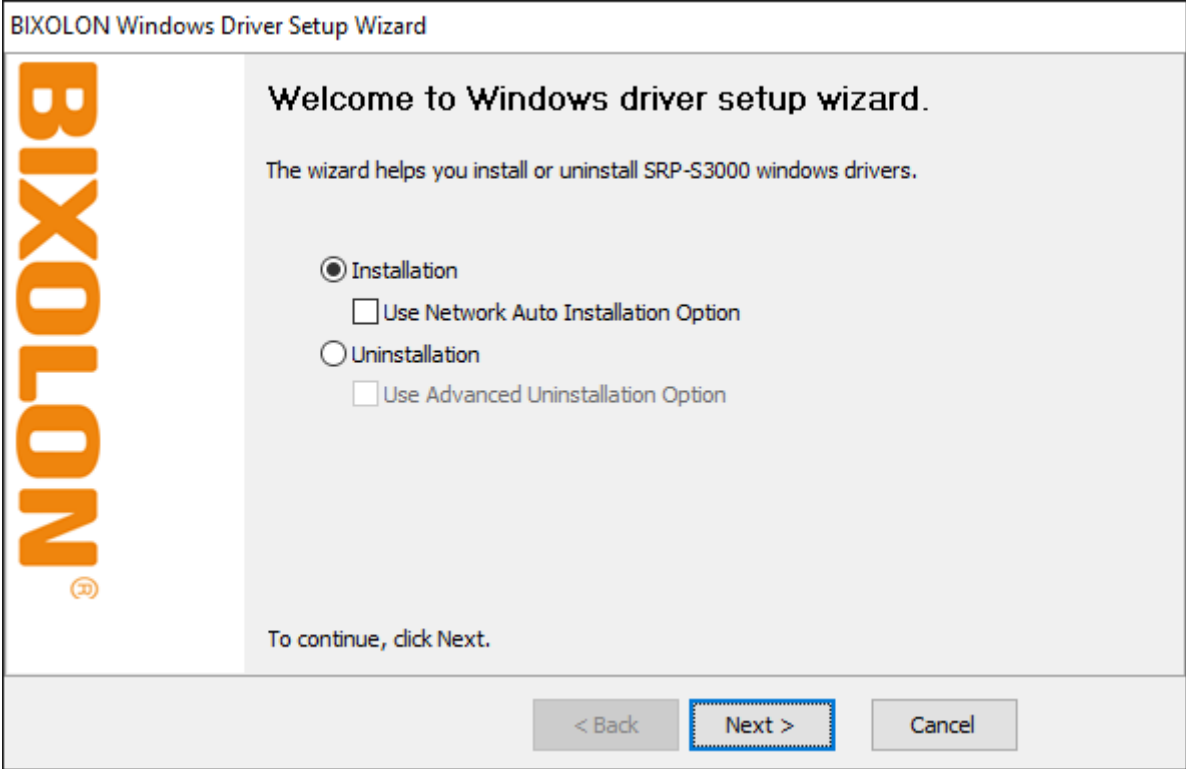
Note

You can download the latest version of Windows driver from our home page. (www.bixelon.com)

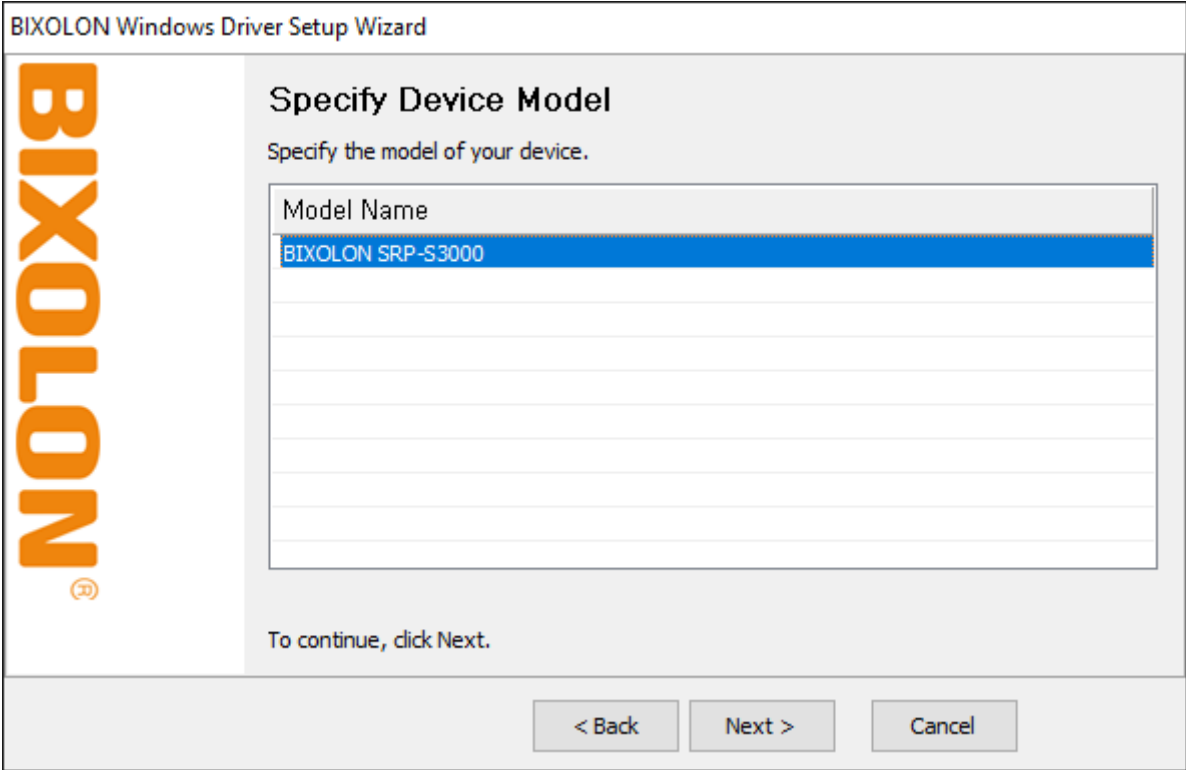
- 1) Double-click the Windows Driver installation file.
- 2) Click **Install**.



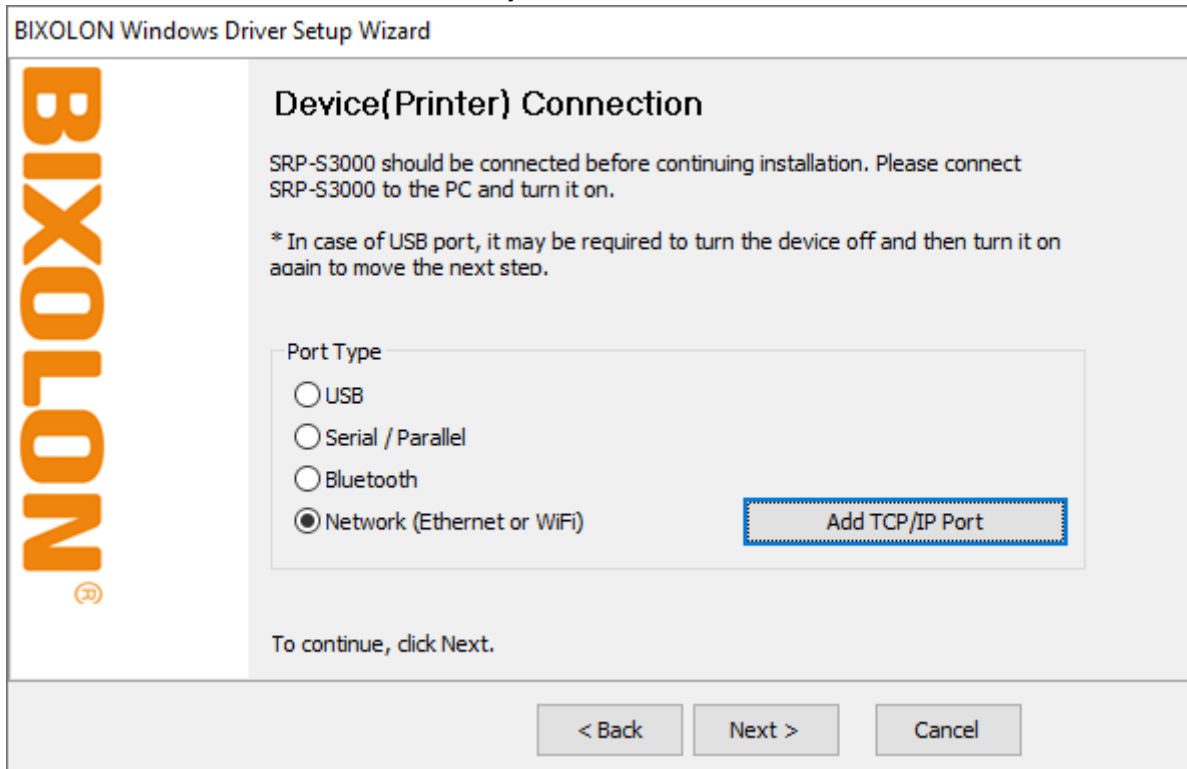
3) Select **Installation** and click **Next**.



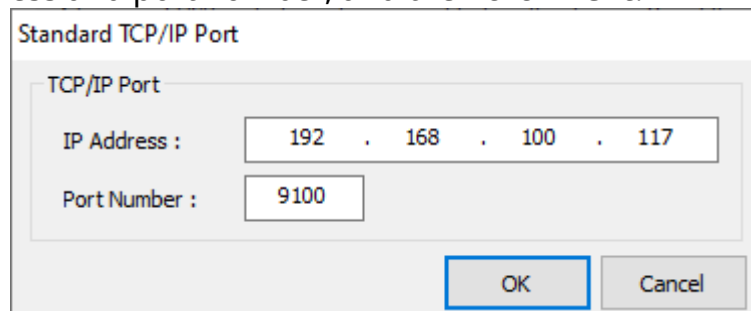
4) Select **Model Name** and click **Next**.



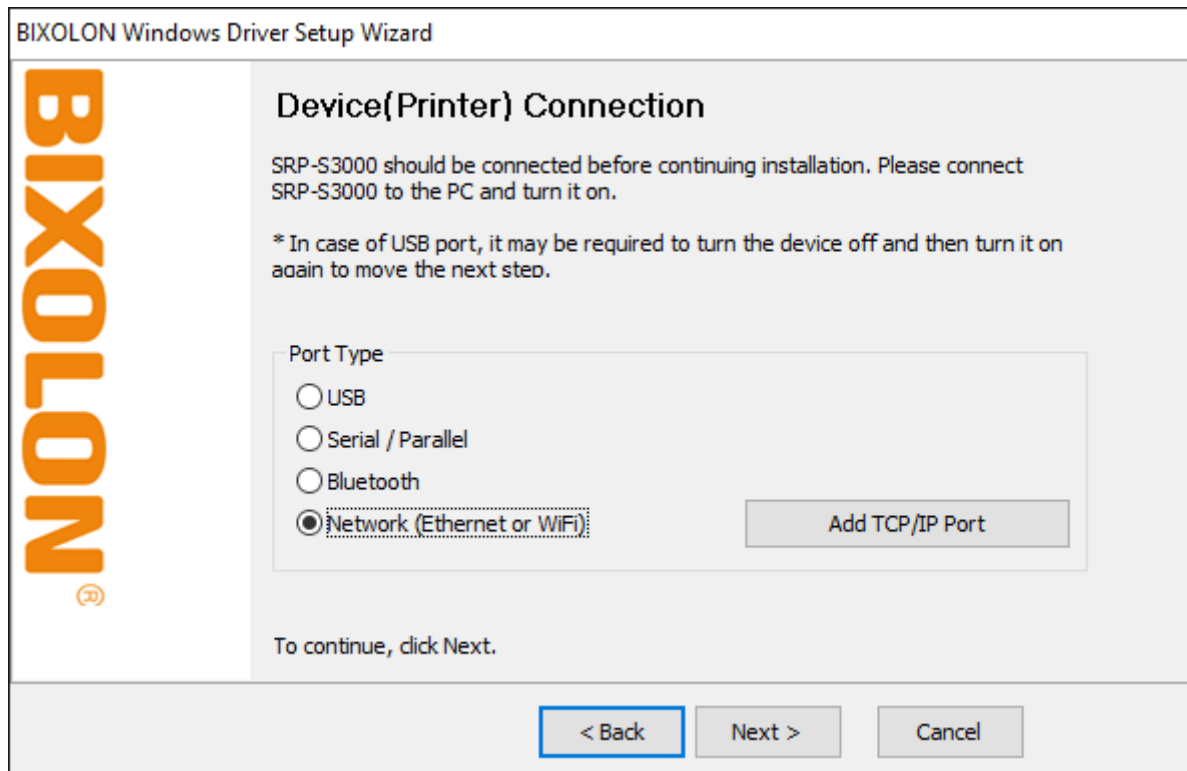
5) Select **Ethernet** and click **Add TCP/IP Port**.



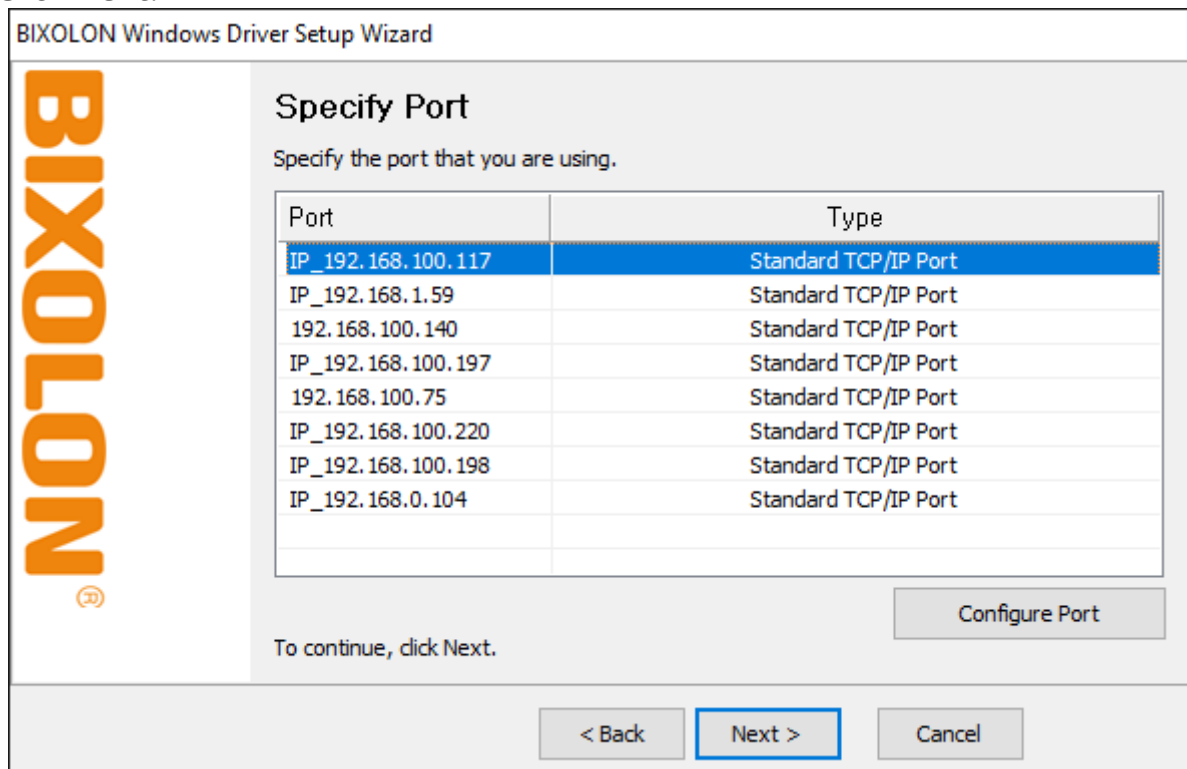
6) Enter the IP address and port number, and then click **Next**.



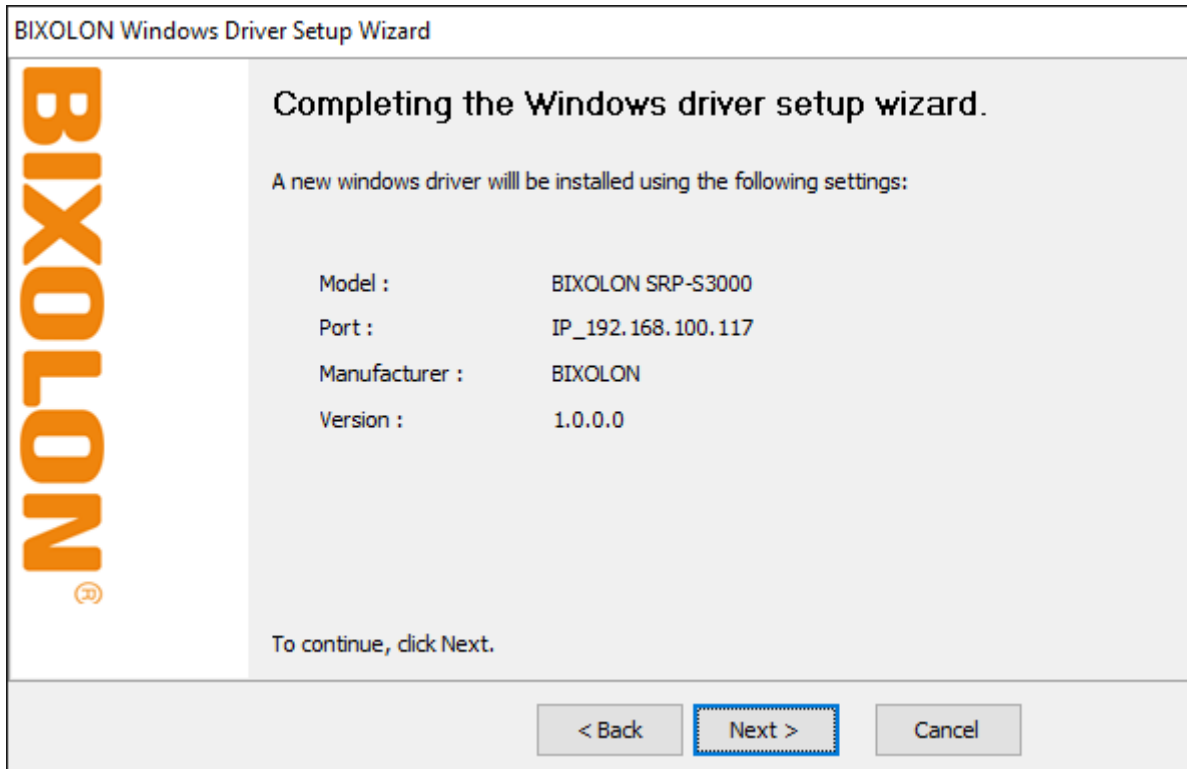
7) Click **Next**.



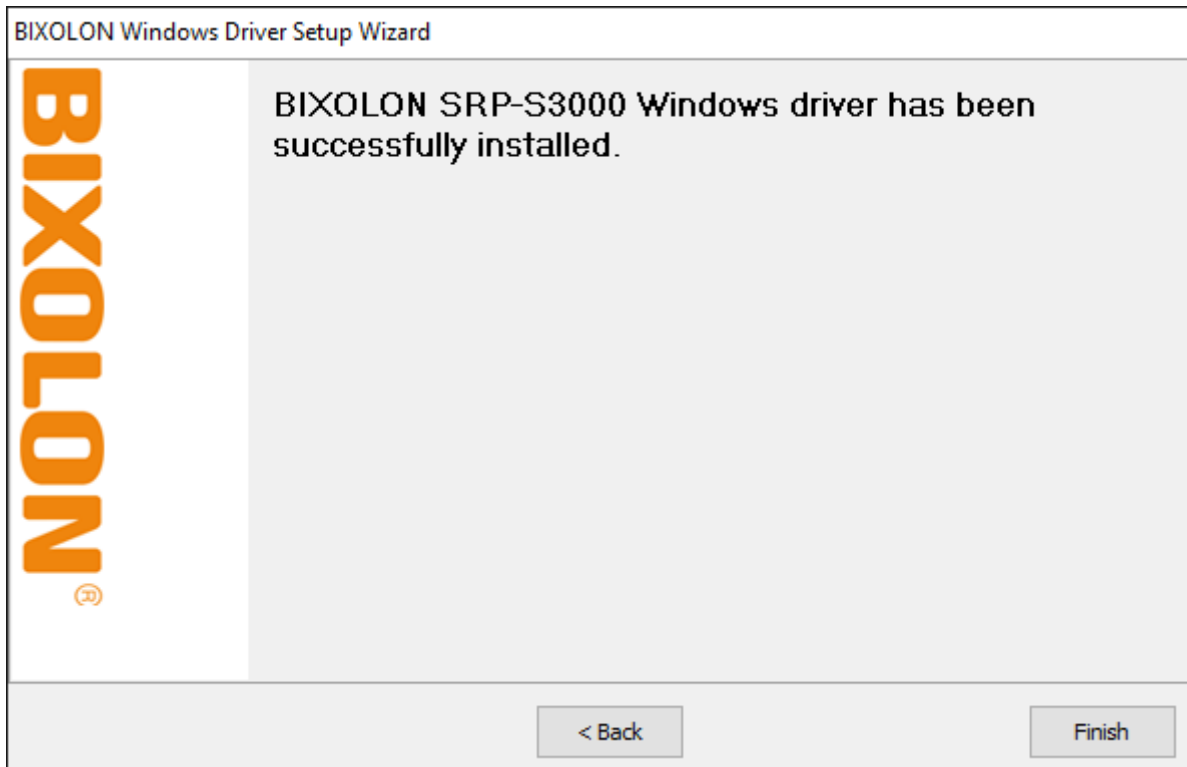
8) Click **Next**.



9) Click **Next**.



10) Click **Finish**.



11) Open the printer properties window in the Windows OS.

(1) Installing on Windows XP / Server 2003

※ Control Panel – Printers and Faxes.

(2) Installing on Windows VISTA / Server 2008 / 7 / 8 / Server 2012 / 10

※ Control Panel – Hardware and Sound – Device and Printers.

12) In the **Ports** tab, click **Configure Port**.

13) Match the communication settings to those of the printer.

Configure Standard TCP/IP Port Monitor

Port Settings

Port Name: IP_192.168.100.117

Printer Name or IP Address: 192.168.100.117

Protocol

Raw LPR

Raw Settings

Port Number: 9100

LPR Settings

Queue Name:

LPR Byte Counting Enabled

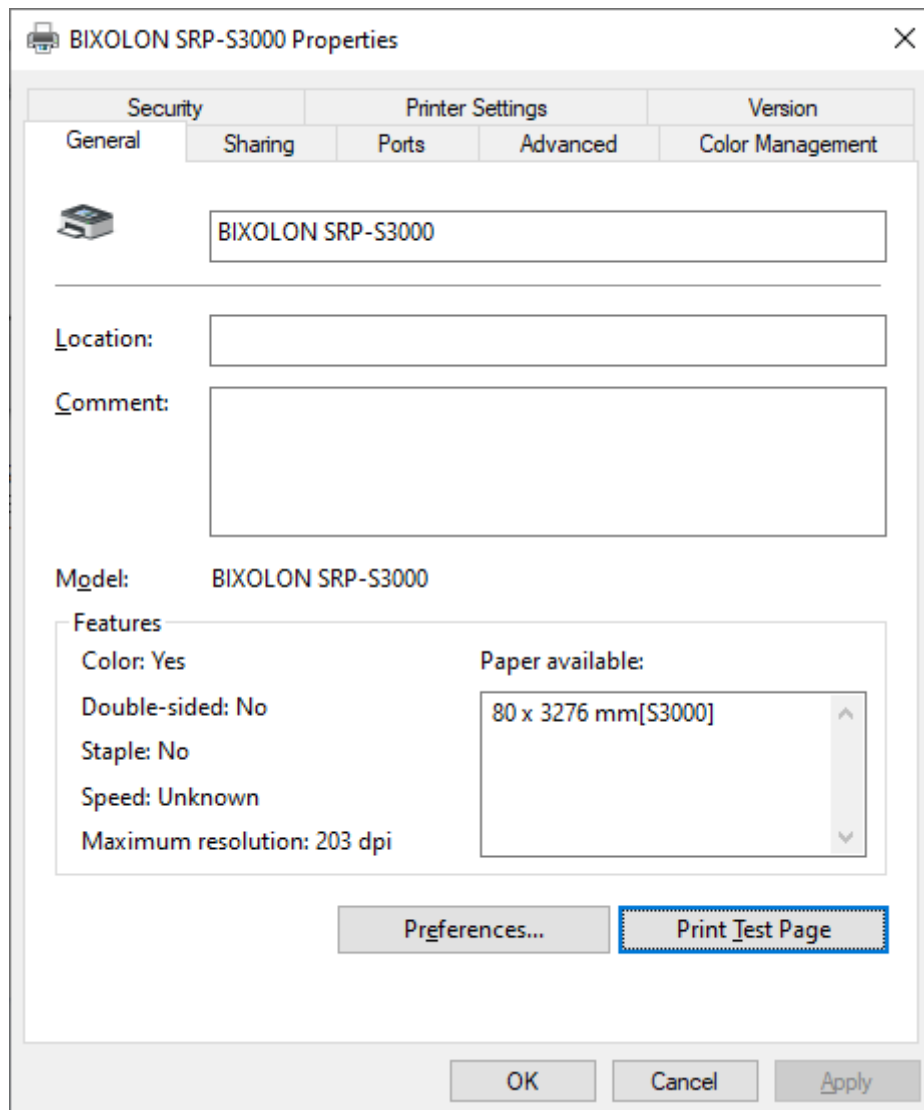
SNMP Status Enabled

Community Name: public

SNMP Device Index: 1

OK Cancel

14) Click **Print Test Page** and check printing status. Proper installation of the driver is indicated if the test page is printed normally.



6. Factory Reset

6-1 Initializing WLAN Setting

This function changes the WLAN settings of the printer to the initial factory settings.

Method

Select the wireless interface on the printer's LCD screen.



WLAN Factory reset is available in Interface > WLAN > WLAN Factory Reset

When the printer is turned off, the wireless LAN setting is applied as the factory default.

6-2 Factory Reset Values

LAN	Network	Inactivity time	0
		IP Assignment Method	Automatic(DHCP)
		Local Port	9100
WLAN	System	Printer Name	*Printer model
		Printer Port Num	9100
		User ID	admin
		User Password	password
	Enc / Auth	Encryption	None/Open
	Network	Network Mode	Soft AP mode
		SSID	PRINTER_{MAC address}
		Inactivity time	10
		IP Assignment Method	Manual (DHCP server)
		IP, Subnet, Gateway	IP : 192.168.1.1 Subnet : 255.255.255.0 Gateway : 192.168.1.2

7. Troubleshooting

<p>Check network setting (Refer to Configuration for checking/changing the printer settings)</p>	<ul style="list-style-type: none"> - IP Address Check the band of the IP Address. Check whether the bands of the printer and the AP (or wireless terminals) are the same. The first three digits of the four digit value of the IP address must be the same. - Subnet Mask Check whether the subnet mask of the printer matches the one in AP (or wireless terminal). - Port Check whether the port configured in the printer and the host (PC, PDA) are the same.
<p>PING Check</p>	<ul style="list-style-type: none"> - Checking IP collision When entering IP address manually without using DHCP, you must check whether the corresponding IP address is used by other equipment. The printer may not work normally when there is a collision in the IP address. When the printer is turned off, carry out the Ping Test to the printer IP. - Ping TEST <ol style="list-style-type: none"> 1) Turn off the printer. 2) Select "Run" from the Windows Start menu, and then enter "cmd". 3) Enter "ARP -d" and delete ARP table. 4) Enter "ping {printer IP}". 5) ARP -d, ping {IP address}

```
C:\WINDOWS\system32\cmd.exe
C:\Documents and Settings>arp -d
C:\Documents and Settings>ping 192.168.1.111
Pinging 192.168.1.111 with 32 bytes of data:
Request timed out.
Request timed out.
Request timed out.
Request timed out.
Ping statistics for 192.168.1.111:
    Packets: Sent = 4, Received = 0, Lost = 4 (100% loss),
C:\Documents and Settings>
```

When you see "Request timed out." as shown below, it means that there is no collision. The corresponding IP can be used.

```
C:\WINDOWS\system32\cmd.exe
C:\Documents and Settings>ping 192.168.1.111
Pinging 192.168.1.111 with 32 bytes of data:
Reply from 192.168.1.111: bytes=32 time<1ms TTL=64
Reply from 192.168.1.111: bytes=32 time<1ms TTL=64
Reply from 192.168.1.111: bytes=32 time<1ms TTL=64
Reply from 192.168.1.111: bytes=32 time<1ms TTL=64
Ping statistics for 192.168.1.111:
    Packets: Sent = 4, Received = 4, Lost = 0 (0% loss),
    Approximate round trip times in milli-seconds:
        Minimum = 0ms, Maximum = 0ms, Average = 0ms
C:\Documents and Settings>_
```

On the other hand, if there is a reply as shown below, then the corresponding IP is used by another network terminal and it cannot be used for the printer IP.

Inactivity Time	If multiple host devices are used with one printer, "Inactivity Time" is Recommended. (Other host devices are restricted to use a printer if one host device keep connecting to a printer.) ex) 5sec
-----------------	--

Copyright

© BIXOLON Co., Ltd. All rights reserved.

This user manual and all property of the product are protected under copyright law. It is strictly prohibited to copy, store, and transmit the whole or any part of the manual and any property of the product without the prior written approval of BIXOLON Co., Ltd.

The information contained herein is designed only for use with this BIXOLON product. BIXOLON is not responsible for any direct or indirect damages, arising from or related to use of this information.

- The BIXOLON logo is the registered trademark of BIXOLON Co., Ltd.
- All other brand or product names are trademarks of their respective companies or organizations.

BIXOLON maintains ongoing efforts to enhance and upgrade the functions and quality of all our products.

In the following, product specifications and/or user manual content may be changed without prior notice.

Caution

Some semiconductor devices are easily damaged by static electricity. You should turn the printer "OFF", before you connect or remove the cables on the rear side, in order to guard the printer against the static electricity. If the printer is damaged by the static electricity, you should turn the printer "OFF".