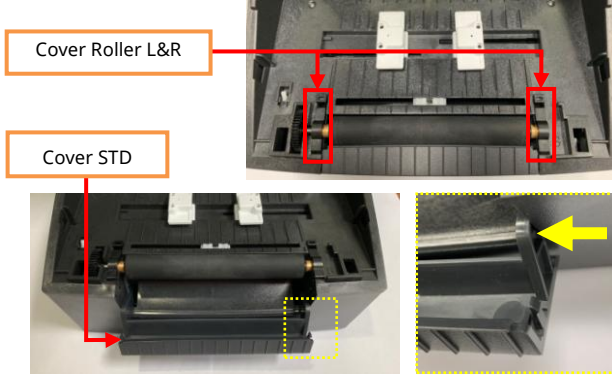


1. Turn the Power Switch Off at the rear of the Printer.



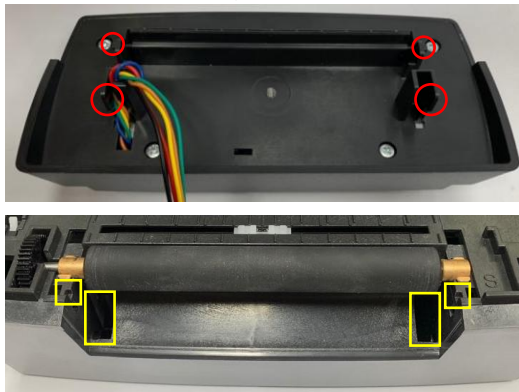
2. Remove the Cover Roller L&R and press the right side of the Cover STD in the direction indicated by the yellow arrow to remove it.
 ※ You can also remove it by pressing the left side in the same manner.



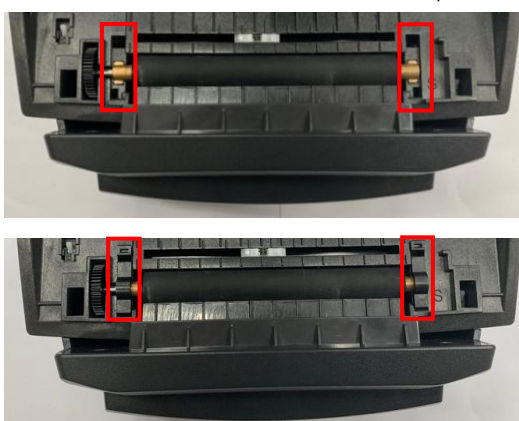
3. Insert the Auto Cutter Wire into the Wire Hole.



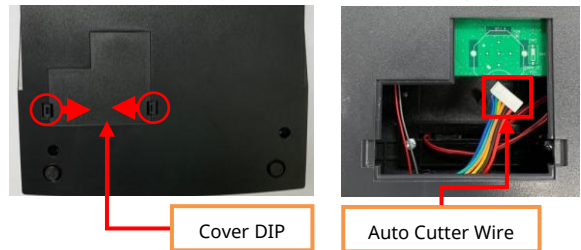
4. Engage the Hooks (red circles) with the square-shaped sockets (yellow squares) in the order from top to bottom.
 ※ Be careful that the Wire does not get stuck.



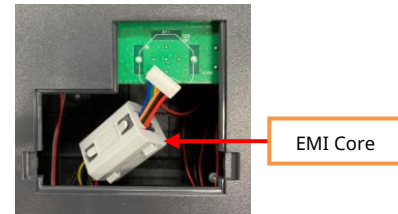
5. Reassemble the Cover Roller L&R that was removed in step 2.



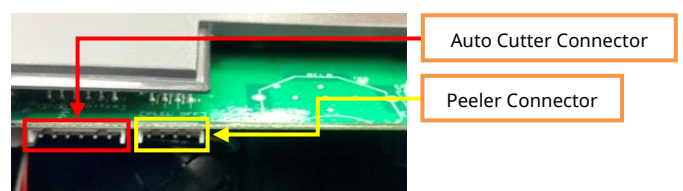
6. Place the bottom of the Printer face the front. Press the Hooks (red circles) toward the inner side to remove the Cover DIP. Then, shape the Auto Cutter Wire as shown below.
 ※ Be careful to avoid tangling with other wires when shaping.



※ For the model SLP-DX42x / TX42x, install the EMI Core into the Auto Cutter Wire As shown below.



7. Insert the Auto Cutter Wire into the Auto Cutter Connector (red square) in the correct direction.

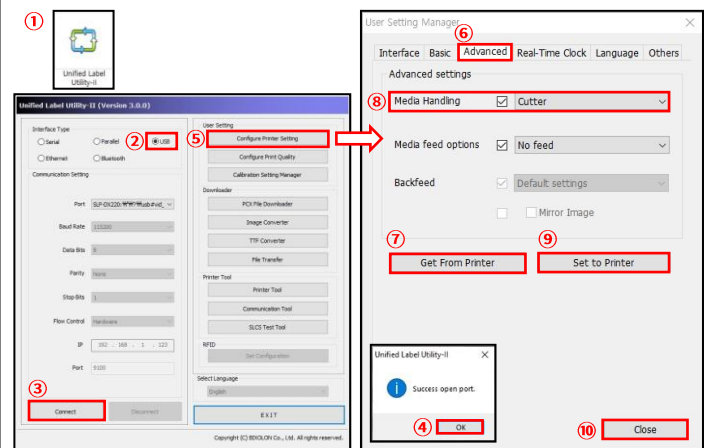


8. Reassemble the Cover DIP that was removed in step 6.



9. In order to operate the Auto Cutter, the settings must be changed through the utility. Access the Bixelon webpage (www.bixelon.com) and download the Unified Label Utility.

Connect the communication cable (USB) and Turn the Printer power On. Then, change the settings in the following order.

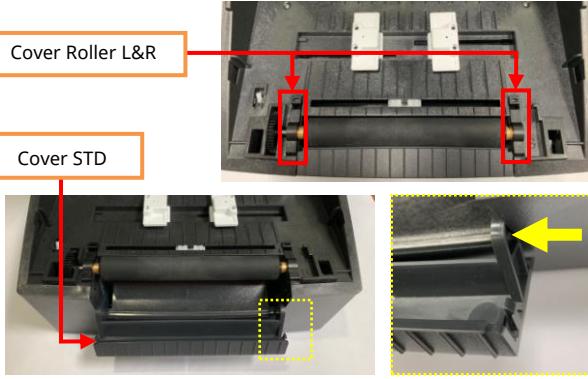


- ① Launch 'Unified Label Utility'
- ② 'USB' Click!
- ③ 'Connect' Click!
- ④ 'OK' Click!
- ⑤ 'Configure Printer Setting' Click!
- ⑥ 'Advanced' Click!
- ⑦ 'Get From Printer' Click!
- ⑧ Media Handling 'Cutter' Setting!
- ⑨ 'Set to Printer' Click!
- ⑩ 'Close' Click!

1. Printer 후면의 Power Switch 를 Off 하십시오.



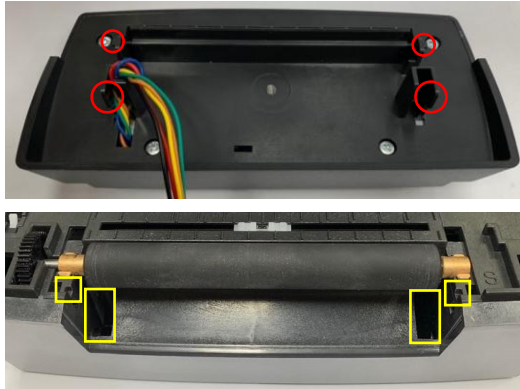
2. Cover Roller L&R 을 분리 후, Cover STD 의 우측을 내측 방향으로 (노란색 화살표)로 눌러 분리하십시오.
※ 같은 방법으로 좌측을 눌러 분리해도 무관 합니다.



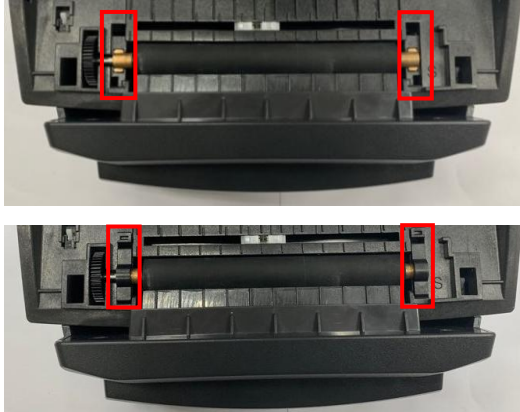
3. Auto Cutter Wire 를 Wire Hole 에 삽입하십시오.



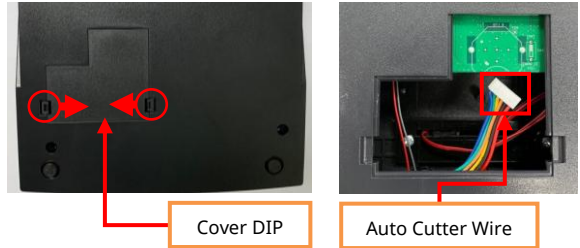
4. 빨간색 원 표시 부의 Hook 를 노란색 사각형 홈에 맞추어 상측에서 하측으로 조립하십시오.
※ 조립 시 Wire 가 끼이지 않도록 주의하십시오.



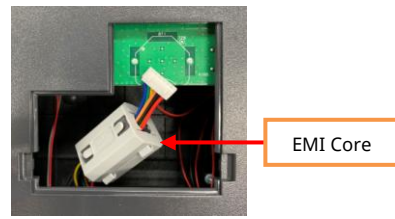
5. 순서 2 에서 분리한 Cover Roller L&R 을 재 조립하십시오.



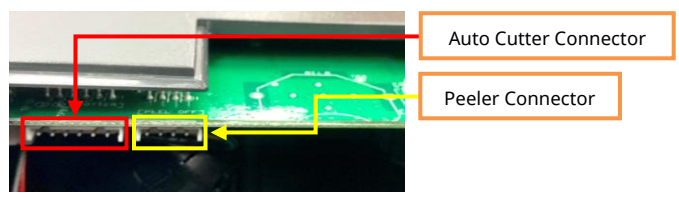
6. Printer 바닥 면이 정면으로 향하게 하십시오. Hook(빨간색 원)을 내측 방향으로 눌러 Cover DIP 을 분리하고, Auto Cutter Wire 를 하기 그림과 같이 보이게 정형하십시오.
※ 다른 Wire 와 꼬이지 않게 정형 하십시오.



※ SLP-DX42x / TX42x 모델의 경우에는 Auto Cutter Wire 에 EMI Core 를 하기 그림과 같이 조립하십시오.



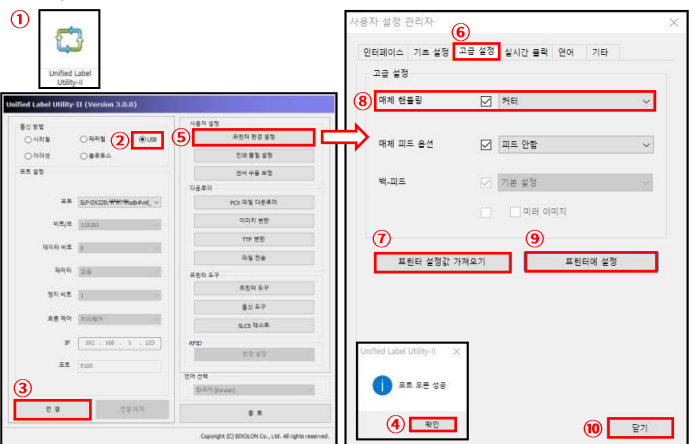
7. Auto Cutter Wire 를 방향에 맞추어 Auto Cutter Connector(빨간색 사각형)에 삽입하십시오.



8. 순서 6 에서 분리한 Cover DIP 을 재 조립하십시오.



9. Auto Cutter 를 작동시키기 위해서는 유틸리티를 통해 설정값을 변경해야 합니다. 빅솔론 홈페이지(www.bixolon.com)에 접속하여 라벨 통합 유틸리티를 다운 받은 후, 통신 케이블(USB) 연결 및 Printer 의 전원을 켜 다음 하기 순서대로 설정을 변경해 주십시오.



- ① 'Unified Label Utility' 실행
- ② 'USB' 클릭!
- ③ '연결' 클릭!
- ④ '확인' 클릭!
- ⑤ '프린터 환경 설정' 클릭!
- ⑥ '고급설정' 클릭!
- ⑦ '프린터 설정값 가져오기' 클릭!
- ⑧ 매체 핸들링 '커터' 선택!
- ⑨ '프린터에 설정' 클릭!
- ⑩ '닫기' 클릭!